

## Instructions for Increasing Java Memory on a Windows PC

### Operating Systems:

Windows XP, Vista, or 7. (Windows is a trademark of the Microsoft Corporation.)

### Browsers:

Firefox 3.x and higher; Microsoft Internet Explorer 7 and higher. (Firefox is a trademark of the Mozilla Foundation.)

### Background:


Computers with less than 2GB of RAM, may require an enhanced allocation of memory to Java in order to assure the proper display and functioning of some SmartGene applications i.e. the ProofReader-IDNS™.

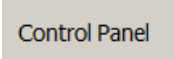
This procedure explains how to adjust the Java memory allocation parameter. Please be aware that every new release of Java may require these adjustments.


### Procedure:

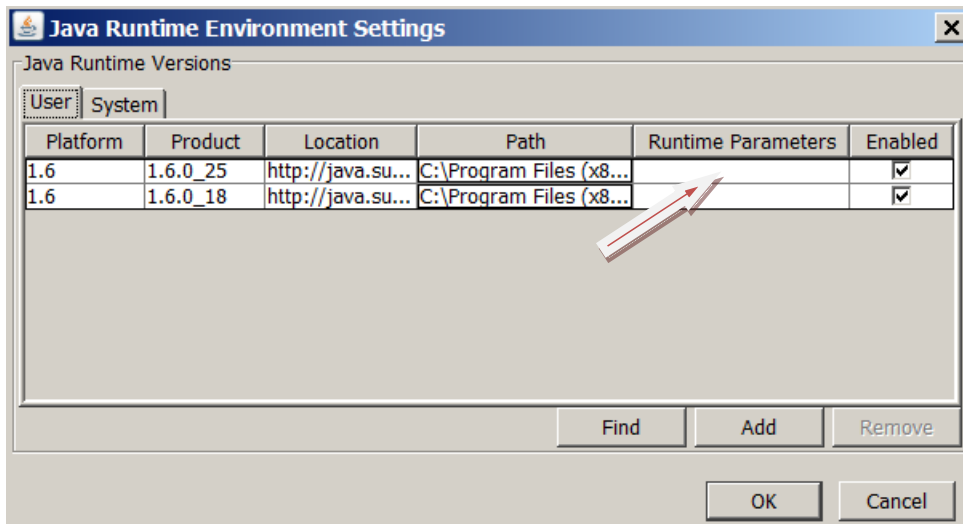
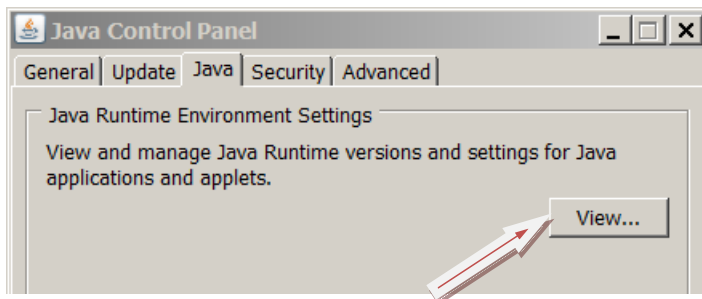
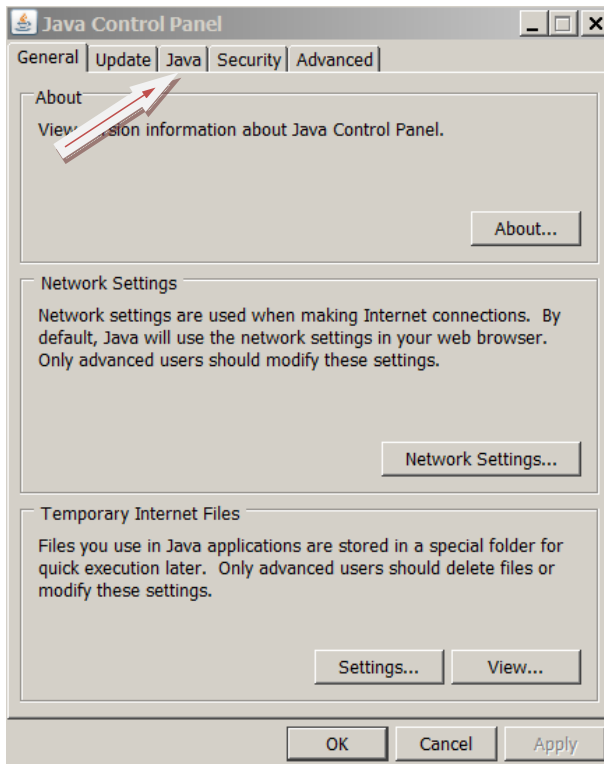
If your browser does not display the ProofReader-IDNS™ properly (computer runs out of available memory), please proceed to adjust the Java memory settings as follows:

1. First, make sure that you are running a recent version of Java (6+). Go to [www.java.com](http://www.java.com) to obtain the latest version.

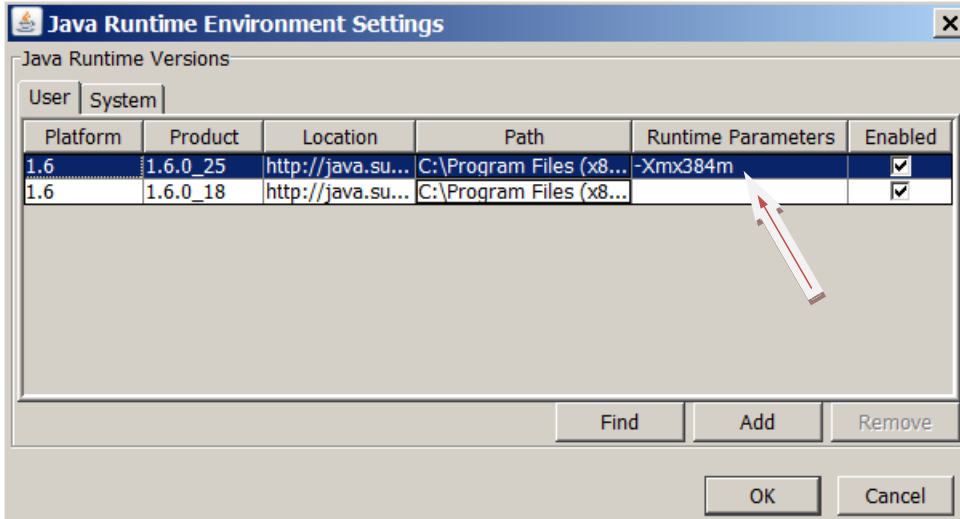
2. Click on 'Start'  or similar button, depending on your Windows version.

3. Click on 'Control Panel'  and find Java; the categories are typically listed alphabetically.

4. Double click on the 'Java Plug-in' or 'Java' icon.  Java
5. If a "Java" icon is not present, Java may not be installed on your computer. Please return to step one.
6. Select the 'Java' tab in the Java Control Panel (see the picture below), and click on the 'View...' button. (In Windows versions prior to Windows 7, select the "View..." button from the 'Java Applet Runtime Settings' section.)



7. Find the most recent version of Java runtime (Note: 1.6.0\_01 is more recent than 1.6.0). **Double click** on the “Runtime Parameters” column in the exact row of the most current version to select that box, and add the code “-Xmx384m” (set Java maximum heap size to 384 MB). If more memory is needed, change 384 to 512, etc., but do not set this number greater than the physical memory in the computer. Please make sure to type this code exactly. See the example below.



8. Click “OK” to exit all dialogs. Close the Control Panel window.
9. Close and restart all browser windows (Internet Explorer, Firefox, whatever you are using) including your SmartGene application. The new Java memory allocation settings will not take effect until the browser is closed and restarted. (A computer restart may be required.)
10. If the memory has been successfully changed, all your SmartGene applications should now display correctly. As noted in step 7, if this is not the case, repeat steps 2-9 increasing the memory amount in step 7 from 384 to 512, etc..

**Please be aware that after any routine Java update, the Java memory allocation settings that you’ve adjusted by following this procedure are typically reset. So, whenever a Java update is installed, this procedure may have to be repeated.**

**If you have questions or concerns, please contact your SmartGene technical support team. Or, you may also contact us via our email addresses as follows:**

**US/Canada:** [contact-us@smartgene.com](mailto:contact-us@smartgene.com)

**Europe:** [contact@smartgene.com](mailto:contact@smartgene.com)